

MK05

KITCHEN MIXER

meir®

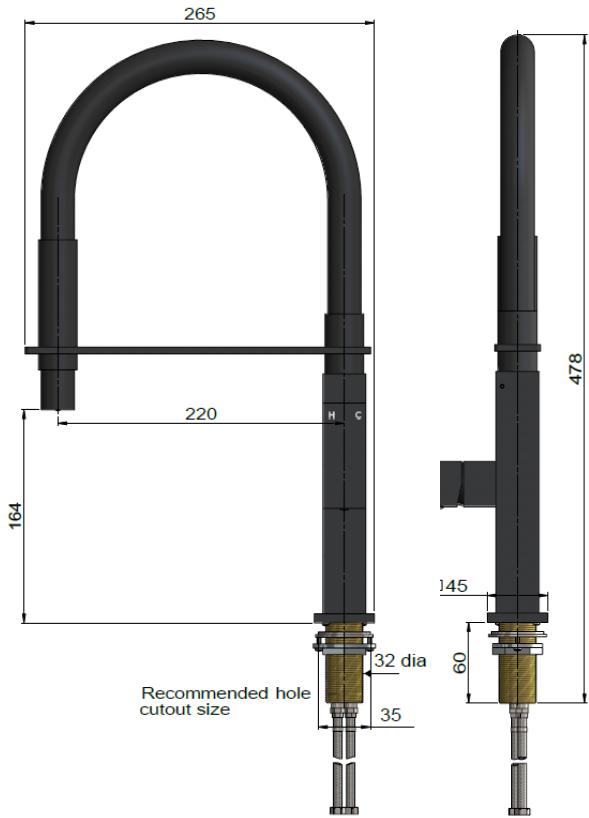
FEATURES

- Refer to the Meir website for warranty terms & conditions.
- Flow rate **7 L p/m**
- European components and cartridge
- Solid brass construction
- Box Weight 3.6 Kg

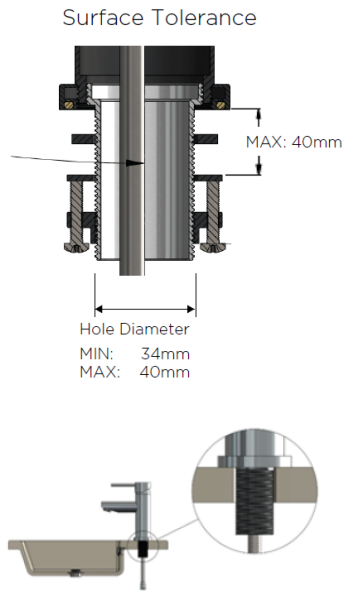
CARE

- Do not install tapware using any form of acetone silicones.
- Do not apply physical items (such as tools) directly to product.
- Never use house-hold or commercial detergents, citrus based cleaners, or abrasive cleaners.
- Clean using a mild washing soap solution rinsed, and dry with a soft cloth.
- Check for any product defects before installation.
- Refer to the installation manual for correct installation.

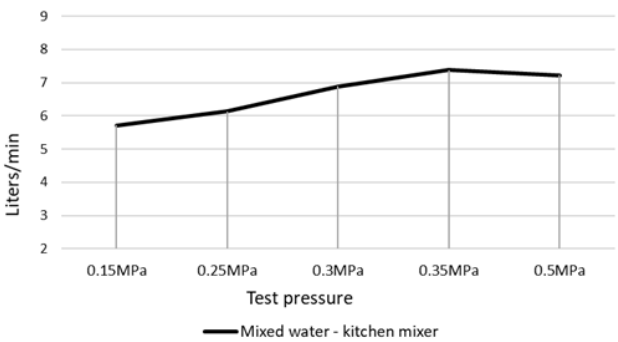
SPECIFICATIONS



TOLERANCES



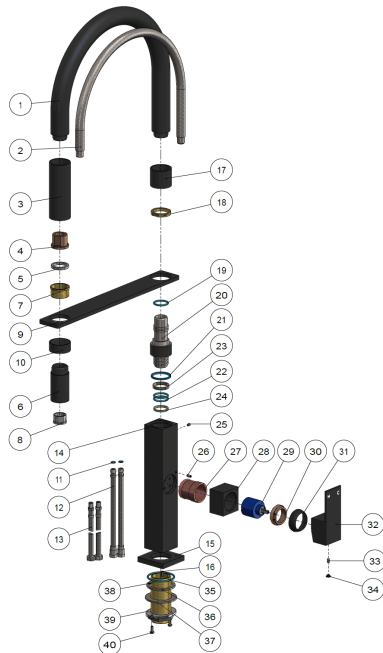
FLOW RATE GRAPH



CREDENTIALS

- Watermark AS/NZS3718WMKA25013
- Wels Rated 4 Star

EXPLODED VIEW



No.	Part Name
1	Spring
2	Braided Tube
3	Water Pipe
4	Spring Joint
5	Flat Washer
6	Connector
7	Protecting Cover
8	Aerator
9	Bracket
10	Connector
11	O-ring
12	Flexible Hose
13	Inlet Hose
14	Body
15	Base
16	Screw
17	Connector
18	Connector
19	O-ring
20	Connector
21	Wearing Ring
22	O-ring
23	Rubber Ring
24	Wear-resisting Ring
25	Screw
26	Screw
27	Copper Sleeve
28	Decor Cover
29	D25 Cartridge
30	Nut
31	Decor Cover
32	Handle
33	Screw
34	Decor Knob
35	O-ring
36	Flat Washer
37	Washer
38	Thread Tube
39	Mount Nut
40	Bolt