

MR02-R

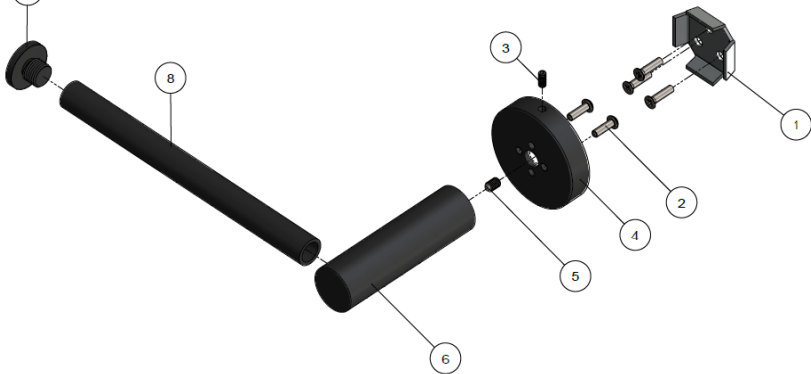
TOILET ROLL HOLDER

meir®



EXPLODED VIEW

No.	Part Number
1	Stator
2	Screw
3	Grub Screw
4	Back plate
5	Screw
6	Fixed seat
7	End Stopper
8	Brass pipe



CARE

- Do not install tapware using any form of acetone silicones.
- Do not apply physical items (such as tools) directly to product.
- Never use house-hold or commercial detergents, citrus based cleaners, or abrasive cleaners.
- Clean using a mild washing soap solution rinsed, and dry with a soft cloth.
- Check for any product defects before installation.
- Refer to the installation manual for correct installation.

FEATURES

- Refer to the Meir website for warranty terms & conditions.
- Solid brass construction
- Box Weight 0.3 kg

SPECIFICATIONS

