







Dolce/Mecca Round Floormount Mixer With Handshower

SPECIFICATION

| | |
|--------------------|-----------------------|
| WELS RATING | 3STAR 9L/MIN |
| WATERMARK LICENSE | WM-060073 |
| TEMPERATURE RATING | MIN 1°C-MAX 75°C |
| PRESSURE RATING | MIN 150KPa-MAX 500KPa |

FINISH

| | | | |
|---|-----------------------------|---|-------------------------------|
|  | CHROME NR210903aCH |  | MATTE BLACK NR210903aMB |
|  | GUN METAL NR210903aGM |  | BRUSHED NICKEL NR210903aBN |
|  | BRUSHED GOLD NR210903aBG |  | BRUSHED BRONZE NR210903aBZ |

MAINTENANCE AND CARE

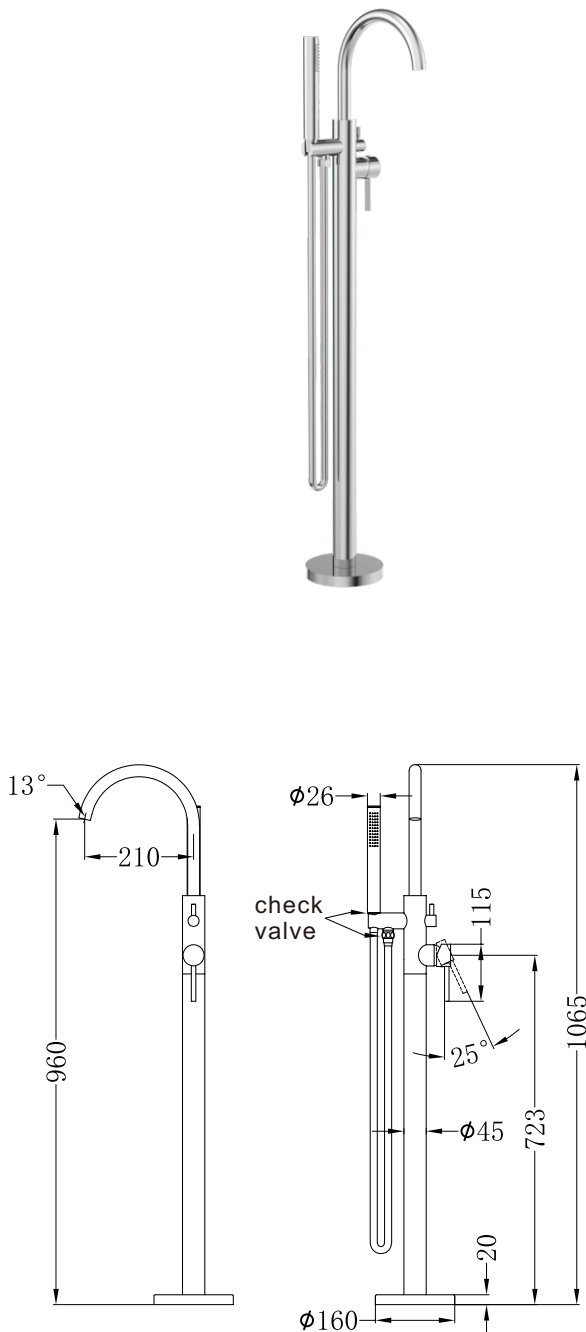
All surfaces should be cleaned with mild liquid detergent or soap and water.

Do not use cream cleaners or citrus based cleaning products, as they are abrasive.

Use of unsuitable cleaning agents may damage the surface. Any damage caused in this way will not be covered by warranty.

PACKING INCLUDES

- 1x hand shower (built-in check valve)
- 1x shower hose
- 1x mixer tap
- 1x extension tube
- 1x floor cover plate
- 2x water pipes
- 1x mixer box
- 1x gloves
- 4x dynabolt
- 1x instruction
- 1x allen key pack
- 1x leveling plate
- 1x gradiometer
- 1x testing plugs



Dimensions are nominal measurements only.



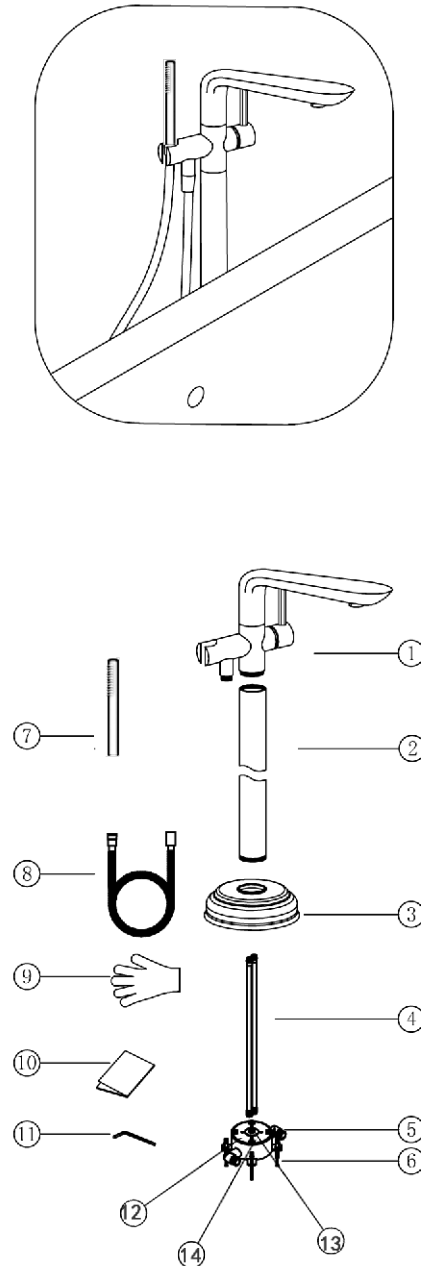
Versions: V1

Installation Instruction

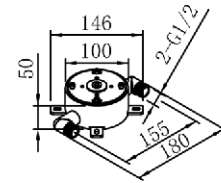
Please inspection all spare parts list when you open box, if any problem, please contract with seller. Spare parts list as follow.

Part List

- 1.Mixer Tap x1pc
- 2.Extension Tube x1pc
- 3.Floor Cover Plate x1pc
- 4.Water Pipes x2pcs
- 5 Mixer Box x1pc
- 6.Dynabolt x4pcs
- 7.Hand Shower x1pc
- 8.PVC Shower Hose x1pc
- 9.Gloves x1pc
- 10.Instruction x1pc
- 11.Allen Key Pack x1pc
- 12.Leveling Plate x1pc
- 13.Gradiometer x1pc
- 14.Testing Plugs x2pcs



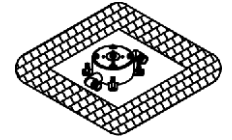
Notice: Not recommend to be installed on concrete slab



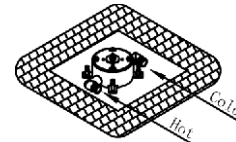
1.Mixer box should not finish more than 2mm above finish tile level



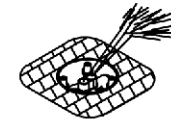
2.Connect hot and cold water use materials recommended Australian standard



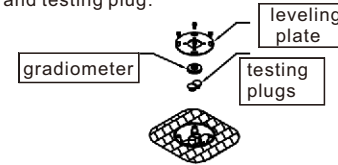
3.Adjust mixer box make sure in a level by gradiometer provided



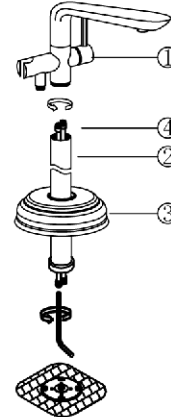
4.Test and check for water leaks



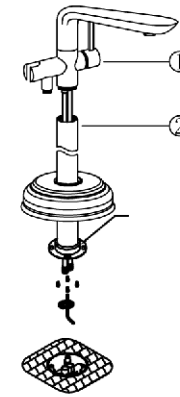
5.Undo 4 grub screws on the leveling plate and take out the gradiometer and testing plug.



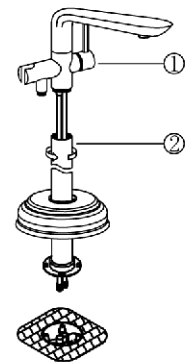
6.Attach the leveling plate onto the extension tube by provided grub screws



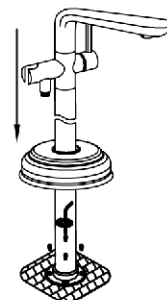
7.Screw hot and cold water pipes into the mixer body



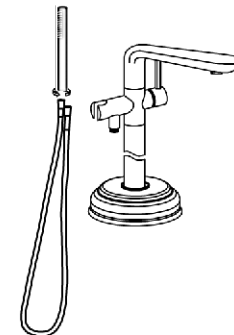
8.Fit floor cover plate onto the extension tube



9.Screw the extension tube onto the mixer, and fix hot and cold water pipers into mixer box by M5 grub screws provided



10.Connect hand shower rose with PVC hose



11.Flush pipes work and test, check for water leaks

