

Dolce Shower Set



Dimensions are nominal measurements only.



Versions: V1

SPECIFICATION

OVERHAND SHOWER WELS RATING	3STAR 8L/MIN
HAND SHOWER WELS RATING	NOT STAR RATED 5.5L/MIN
WATERMARK LICENSE	WM-060093
TEMPERATURE RATING	MIN 1°C-MAX 75°C
PRESSURE RATING	MIN 150KPa-MAX 500KPa

FINISH

	CHROME NR250805aCH		MATTE BLACK NR250805aMB
	BRUSHED NICKEL NR250805aBN		GUN METAL NR250805aGM
	BRUSHED GOLD NR250805aBG		

MAINTENANCE AND CARE

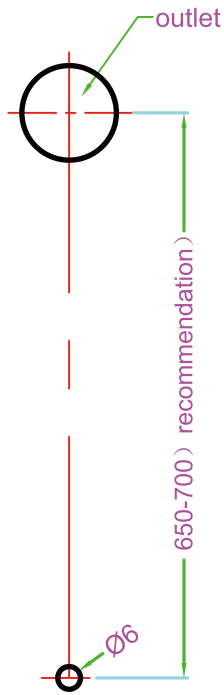
All surfaces should be cleaned with mild liquid detergent or soap and water.

Do not use cream cleaners or citrus based cleaning products, as they are abrasive.

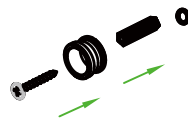
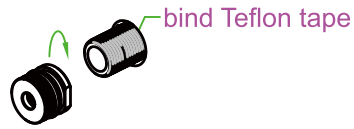
Use of unsuitable cleaning agents may damage the surface. Any damage caused in this way will not be covered by warranty

PACKING INCLUDES

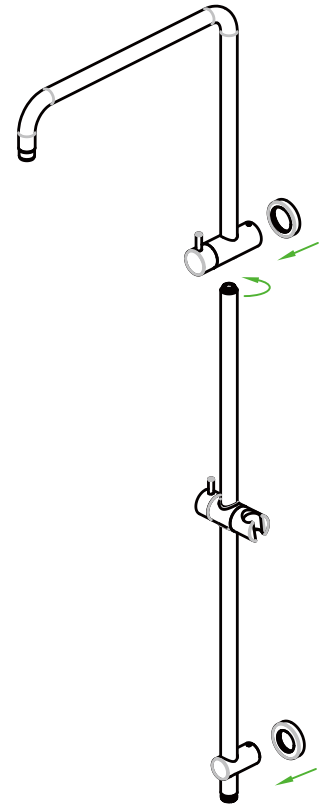
- 1x shower arm
- 1x shower rail
- 1x shower head
- 1x hand shower (built-in check valve)
- 1x 1.5m PVC hose



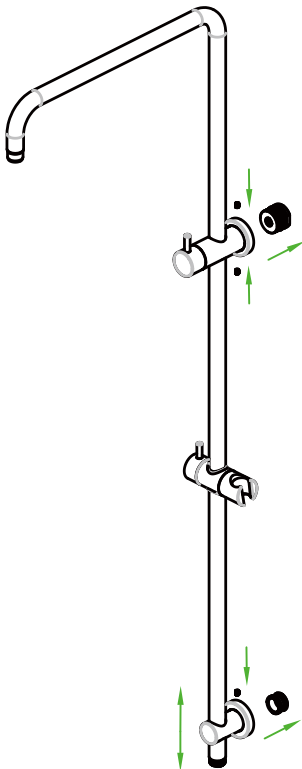
1. Drill a $\phi 6$ mm hole at the outlet vertical downward position in the recommended range.



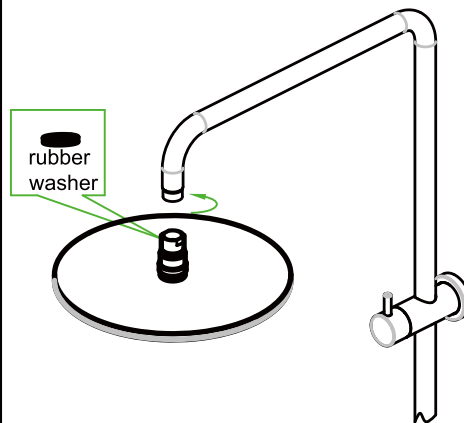
2. Screw the adapter onto the outlet. Push wall plug into drilled hole. Fit lower mounting pillar in place with screw. Tighten firmly.



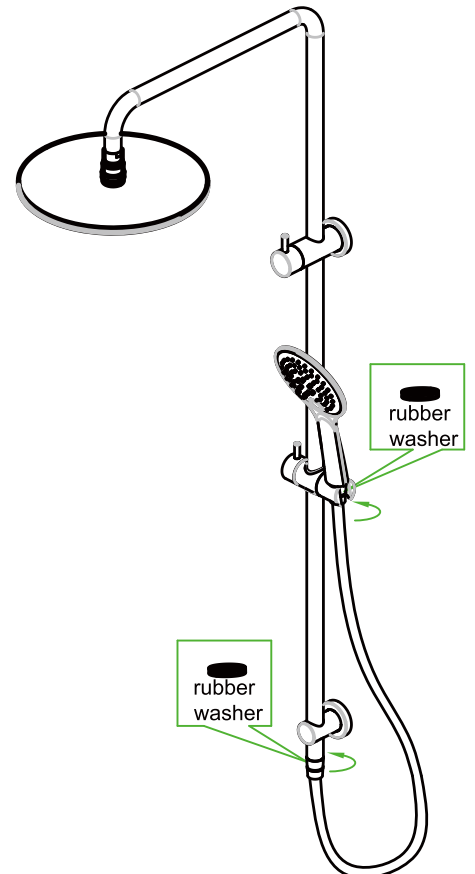
3. Screw shower rail into shower arm component. Tighten firmly. Push 2 back plates onto shower arm component and lower mounting pillar.



4. Locate and push shower rail assembly onto wall adapters. Tighten grub screws firmly with allen key provided. Slide the back plates against the wall/tile face properly.



5. Screw shower head to shower arm with care. (Note the rubber washer in the shower head.)



6. Please noted the rubber washer in the hand shower. Connect shower rail and hand shower with hose. TEST & CHECK FOR LEAKS.