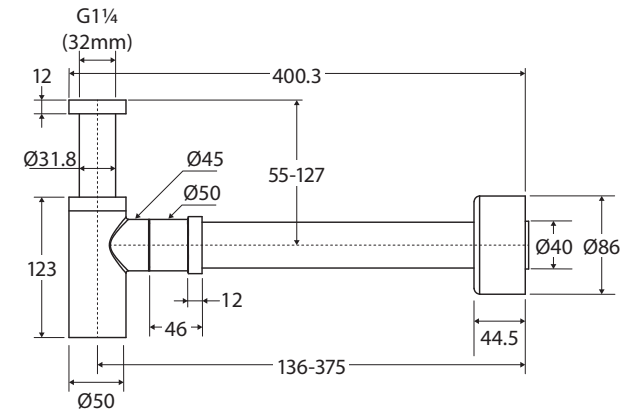
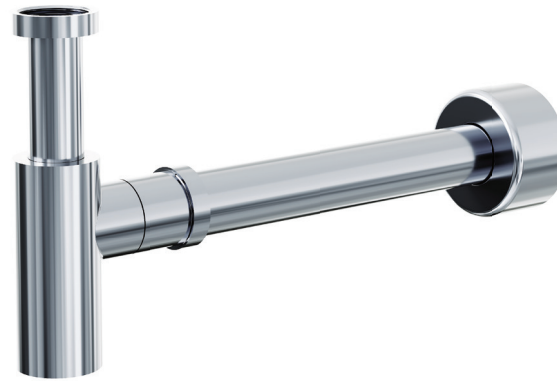


# Universal BOTTLE TRAP

## Features

- Can be installed for AS1428.1:2021 Accessible compliance
- Designed for use with wall mounted basins
- Colours match Fienza tapware, showers, and accessories
- Adjustable height and length
- Suits 32 mm basin wastes
- Made from solid brass



## Available in



Chrome  
**BTRAPF**



Electroplated  
Matte Black  
**BTRAPB**



PVD Brushed Nickel  
**BTRAPBN**



PVD Gun Metal  
**BTRAPGM**



PVD Urban Brass  
**BTRAPUB**

## Cleaning & Care

- Regularly clean with mild soapy water using a microfibre cloth.
- In highly polluted or coastal locations, we recommend cleaning 2-3 times per week.
- Do not use harsh detergents, bleach, cream cleaners or citrus based cleaners. These substances are abrasive and will damage the surface.
- Do not use undue pressure and wipe in one direction only.



While we aim to ensure specifications are correct at the time of publication, Fienza reserves the right to make modifications without prior notice. Physical colour may vary from image shown. All measurements are shown in millimetres. Always use physical product measurements for mark-ups and roughing-in as the technical drawing may differ from actual product received.