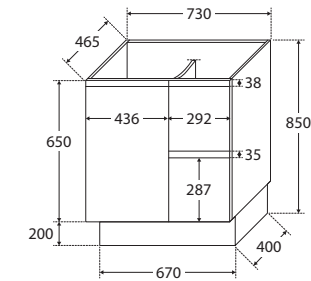


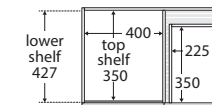
Fingerpull Satin Black 750MM CABINET ON KICKBOARD

Features

- 2pac satin black exterior (70% matte, 30% gloss)
- Black interior
- U-shape fingerpull channel
- Soft-close door and drawers
- Full extension drawer runners
- 16 mm thick backing board and drawer bases
- FSC certified, eco-friendly E0 board



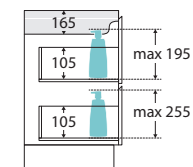
TOP VIEW: SHELF AREA & DRAWER AREA



SIDE VIEW:
SHELF STORAGE



SIDE VIEW: RECESS
& DRAWER STORAGE



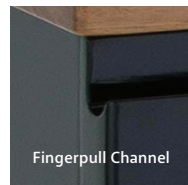
Available in



Satin Black with
Left Drawers
75ZBK L



Satin Black with
Right Drawers
75ZBK R



Fingerpull Channel

Cleaning & Care

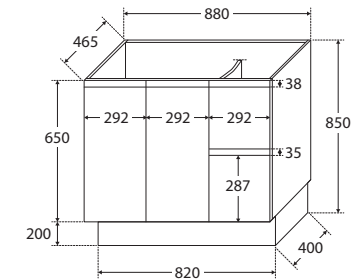
- Regularly clean with mild soapy water using a clean, soft cloth.
- Do not use harsh detergents, bleach, abrasive cleaners or cream/wax cleaners. These substances can result in scratches and/or deposit build-ups that will affect the appearance.
- Avoid placing hot objects, such as hair straighteners, on any surface as these will cause discolouration and marking.
- Spills of hair dye, after-shave lotion, nail polish and remover, aerosol spray and other harsh chemicals should be removed immediately to prevent damage and discolouration. Clean immediately with mild soapy water using a clean, soft cloth.

We aim to ensure that specifications are correct at the time of publication. All measurements are shown in millimetres. For MDF cabinetry, please allow +/- 5 mm tolerance per 1000 mm for manufacturing variance in straightness. Always use measurements of actual product received for final specification as the technical drawing may contain differences. Due to printing limitations, physical colour may vary from the image shown. Fienza reserves the right to make modifications without prior notice.

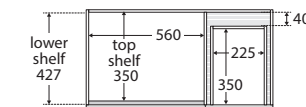
Fingerpull Satin Black 900MM CABINET ON KICKBOARD

Features

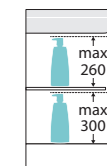
- 2pac satin black exterior (70% matte, 30% gloss)
- Black interior
- U-shape fingerpull channel
- Soft-close doors and drawers
- Full extension drawer runners
- 16 mm thick backing board and drawer bases
- FSC certified, eco-friendly E0 board



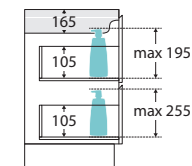
TOP VIEW: SHELF AREA & DRAWER AREA



SIDE VIEW:
SHELF STORAGE



SIDE VIEW: RECESS
& DRAWER STORAGE



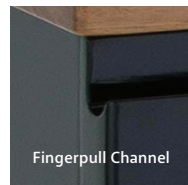
Available in



Satin Black with
Left Drawers
90ZBKL



Satin Black with
Right Drawers
90ZBKR



Fingerpull Channel

Cleaning & Care

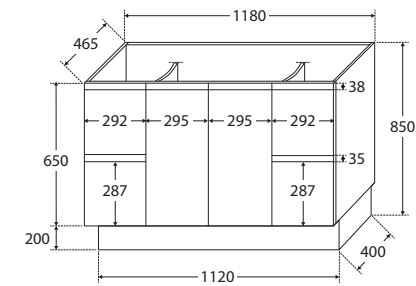
- Regularly clean with mild soapy water using a clean, soft cloth.
- Do not use harsh detergents, bleach, abrasive cleaners or cream/wax cleaners. These substances can result in scratches and/or deposit build-ups that will affect the appearance.
- Avoid placing hot objects, such as hair straighteners, on any surface as these will cause discolouration and marking.
- Spills of hair dye, after-shave lotion, nail polish and remover, aerosol spray and other harsh chemicals should be removed immediately to prevent damage and discolouration. Clean immediately with mild soapy water using a clean, soft cloth.

We aim to ensure that specifications are correct at the time of publication. All measurements are shown in millimetres. For MDF cabinetry, please allow +/- 5 mm tolerance per 1000 mm for manufacturing variance in straightness. Always use measurements of actual product received for final specification as the technical drawing may contain differences. Due to printing limitations, physical colour may vary from the image shown. Fienza reserves the right to make modifications without prior notice.

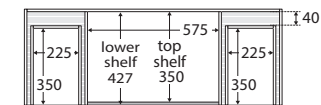
Fingerpull Satin Black 1200MM CABINET ON KICKBOARD

Features

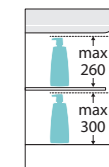
- 2pac satin black exterior (70% matte, 30% gloss)
- Black interior
- U-shape fingerpull channel
- Soft-close doors and drawers
- Full extension drawer runners
- 16 mm thick backing board and drawer bases
- FSC certified, eco-friendly E0 board



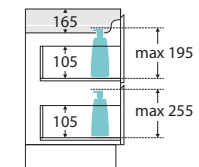
TOP VIEW: SHELF AREA & DRAWER AREA



SIDE VIEW:
SHELF STORAGE



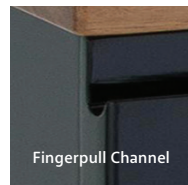
SIDE VIEW: RECESS
& DRAWER STORAGE



Available in



Satin Black
120ZBK



Fingerpull Channel

Cleaning & Care

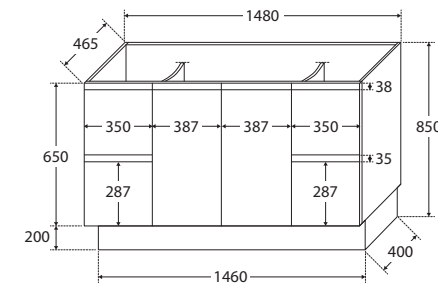
- Regularly clean with mild soapy water using a clean, soft cloth.
- Do not use harsh detergents, bleach, abrasive cleaners or cream/wax cleaners. These substances can result in scratches and/or deposit build-ups that will affect the appearance.
- Avoid placing hot objects, such as hair straighteners, on any surface as these will cause discolouration and marking.
- Spills of hair dye, after-shave lotion, nail polish and remover, aerosol spray and other harsh chemicals should be removed immediately to prevent damage and discolouration. Clean immediately with mild soapy water using a clean, soft cloth.

We aim to ensure that specifications are correct at the time of publication. All measurements are shown in millimetres. For MDF cabinetry, please allow +/- 5 mm tolerance per 1000 mm for manufacturing variance in straightness. Always use measurements of actual product received for final specification as the technical drawing may contain differences. Due to printing limitations, physical colour may vary from the image shown. Fienza reserves the right to make modifications without prior notice.

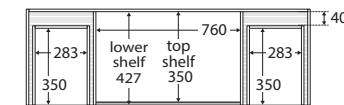
Fingerpull Satin Black 1500MM CABINET ON KICKBOARD

Features

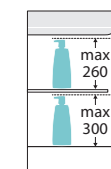
- 2pac satin black exterior (70% matte, 30% gloss)
- Black interior
- U-shape fingerpull channel
- Soft-close doors and drawers
- Full extension drawer runners
- 16 mm thick backing board and drawer bases
- FSC certified, eco-friendly E0 board



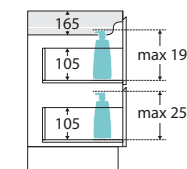
TOP VIEW: SHELF AREA & DRAWER AREA



SIDE VIEW:
SHELF STORAGE



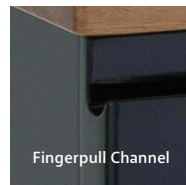
SIDE VIEW: RECESS
& DRAWER STORAGE



Available in



Satin Black
150ZBK



Cleaning & Care

- Regularly clean with mild soapy water using a clean, soft cloth.
- Do not use harsh detergents, bleach, abrasive cleaners or cream/wax cleaners. These substances can results in scratches and/or deposit build-ups that will affect the appearance.
- Avoid placing hot objects, such as hair straighteners, on any surface as these will cause discolouration and marking.
- Spills of hair dye, after-shave lotion, nail polish and remover, aerosol spray and other harsh chemicals should be removed immediately to prevent damage and discolouration. Clean immediately with mild soapy water using a clean, soft cloth.

We aim to ensure that specifications are correct at the time of publication. All measurements are shown in millimetres. For MDF cabinetry, please allow +/- 5 mm tolerance per 1000 mm for manufacturing variance in straightness. Always use measurements of actual product received for final specification as the technical drawing may contain differences. Due to printing limitations, physical colour may vary from the image shown. Fienza reserves the right to make modifications without prior notice.