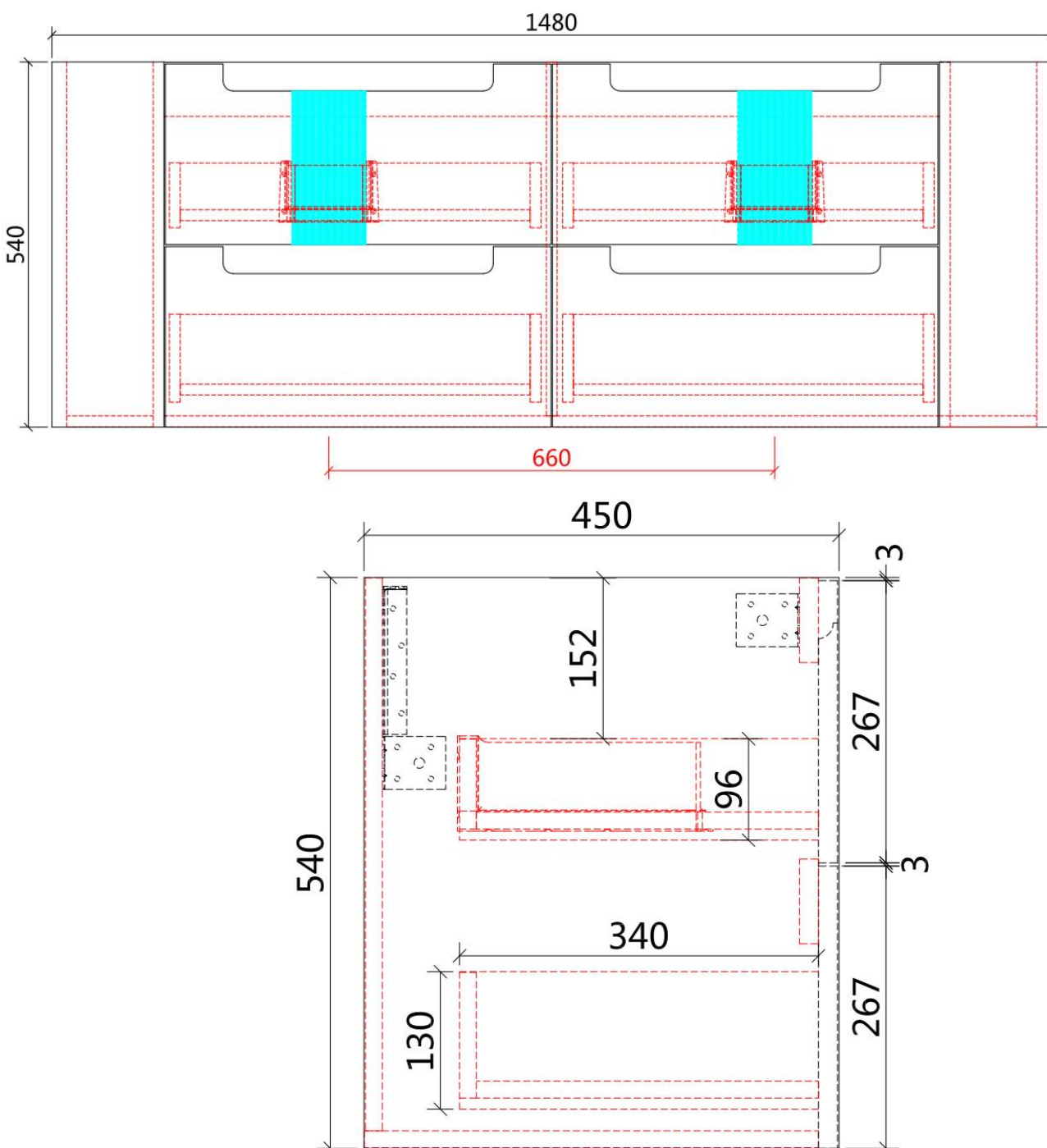


CURVA WALL HUNG

Code: CAWH46-1500



Features:

- All-drawers model with curved feature ends.
- Stacked drawers: Versatile and spacious
- Premium-grade, durable timber plywood
- Contemporary V-groove in matte white polyurethane finish
- Hettich Quadro S full extension, soft close drawer runners
- Minimalist L-rail design finger pull drawers
- Drawer Organiser included
- Premium-grade, durable timber

