









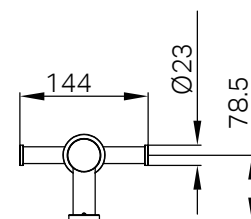
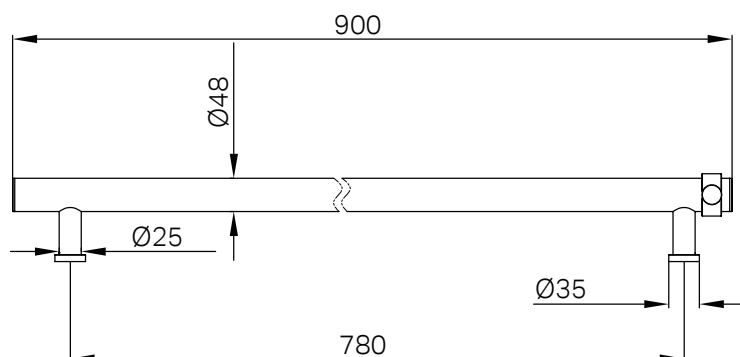
## Non-Heated Vertical Towel Rail 900mm

### Finish & SKU

 <b>Chrome</b> NRV901CH	 <b>Brushed Nickel</b> NRV901BN
 <b>Matte Black</b> NRV901MB	 <b>Brushed Gold</b> NRV901BG
 <b>Brushed Bronze</b> NRV901BZ	 <b>Gun Metal</b> NRV901GM
 <b>Graphite</b> NRV901GR	 <b>Matte White</b> NRV901MW

### Features

- 304 grade stainless steel construction for durability
- Non-heated type



### Maintenance And Care

- Regularly check the mixer and connections for signs of wear or leaks.
- Clean the tap with mild soapy water to maintain its appearance, avoiding harsh chemicals and abrasive materials that may damage the finish.

- Dimensions are nominal measurements only.