

## Zen SS316L Tall Basin Mixer Handless

### Finish & SKU



**Brushed Bronze**

NR162201cBZ



**Graphite**

NR162201cGR



**Brushed Gold**

NR162201cBG



**Brushed Nickel**

NR162201cBN



### Specifications

#### Watermark License

WM-060073

#### Temperature Rating

Min 1°C-Max 75°C

#### Pressure Rating

Min 150kpa-Max 500kpa

### Warranty



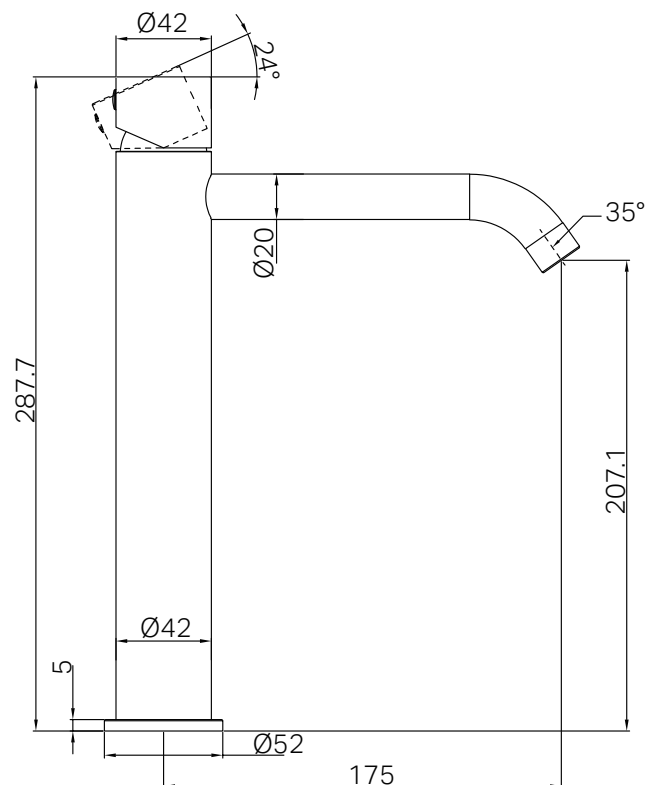
Lead Free

### Features

- 25mm ceramic disc cartridge can be adjusted to control water temperature and flow control settings, saving energy
- Solid 316L stainless steel construction for longevity
- NEOPERL laminar aerator with slim stream flow director
- Polyamide PEX flexible hoses-1/2BSP female
- Suitable for mains pressure installation

### Maintenance And Care

- Regularly check the mixer and connections for signs of wear or leaks.
- Clean the tap with mild soapy water to maintain its appearance, avoiding harsh chemicals and abrasive materials that may damage the finish.



- Dimensions are nominal measurements only.