

Zen SS316L Wall Basin/Bath Mixer 185/230mm Spout Trim Kits Only

Finish & SKU

	Brushed Bronze NR162210a(185/230)tBZ		Graphite NR162210a(185/230)tGR
	Brushed Gold NR162210a(185/230)tBG		Brushed Nickel NR162210a(185/230)tBN



Specifications

Watermark License

WM-060073

Temperature Rating

Min 1°C-Max 75°C

Pressure Rating

Min 150kpa-Max 500kpa

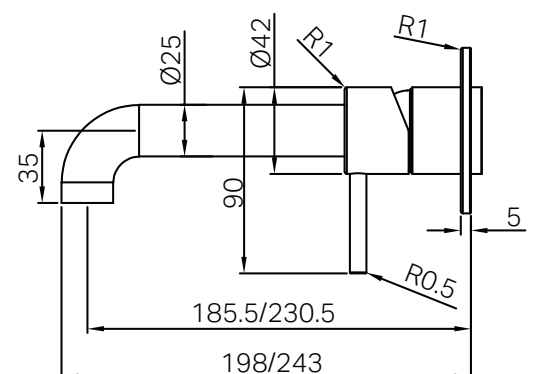
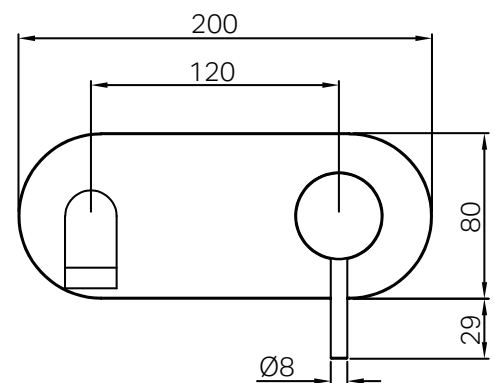
Warranty



Lead Free

Features

- 316L stainless steel wall plate construction for longevity
- Compatible with SS316L 35mm Premium universal wall basin/bath mixer body
- NEOPERL laminar aerator with slim stream flow director
- Available in 2 different spout lengths
- Includes an additional non-restricting aerator for bath use.



Maintenance And Care

- Regularly check the mixer and connections for signs of wear or leaks.
- Clean the tap with mild soapy water to maintain its appearance, avoiding harsh chemicals and abrasive materials that may damage the finish.

- Dimensions are nominal measurements only.